



DOWNTOWN IMPROVEMENTS

**PUBLIC
MEETING**

WEDNESDAY, AUGUST 31, 2022

AGENDA

WELCOME

CUMBERLAND ST. STREETScape PROJECT

STECKBECK ENGINEERING & SURVEYING, INC.

STEVE SHERK, DIRECTOR OF CIVIL ENGINEERING

ETHAN GEHENIO, ENGINEERING ASSOCIATE

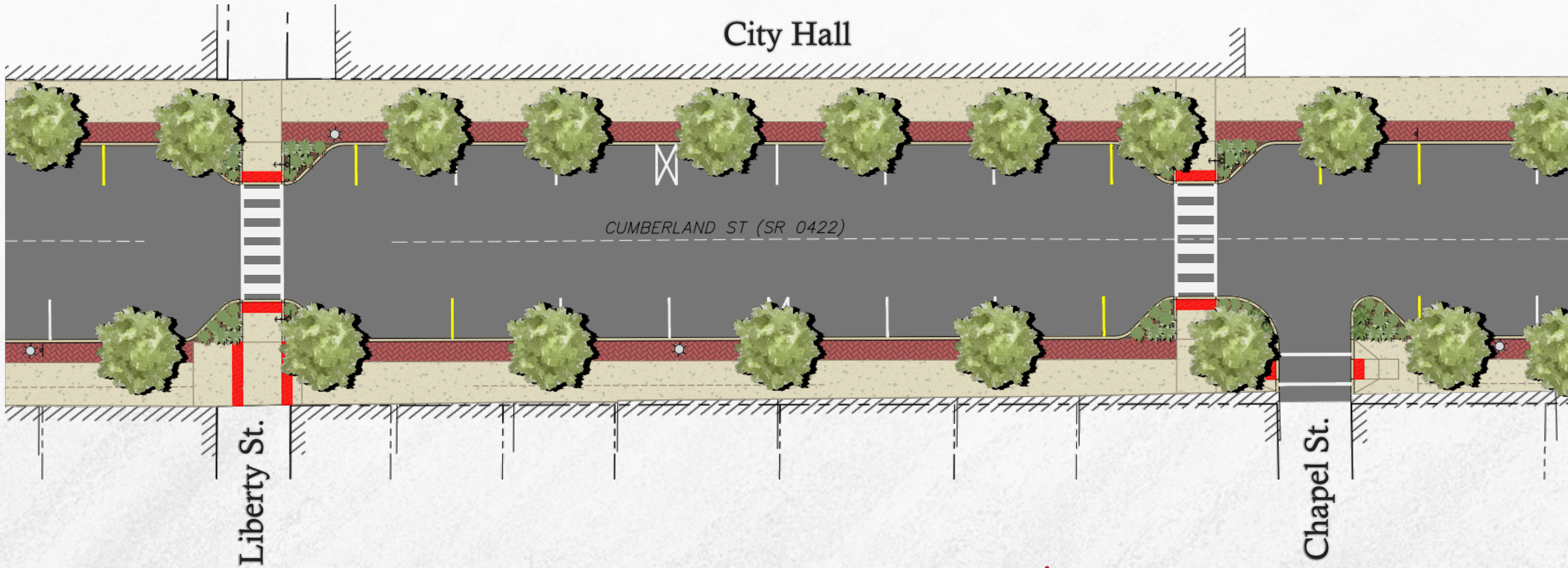
LIBERTY PARK TRAIL

DERCK & EDSON

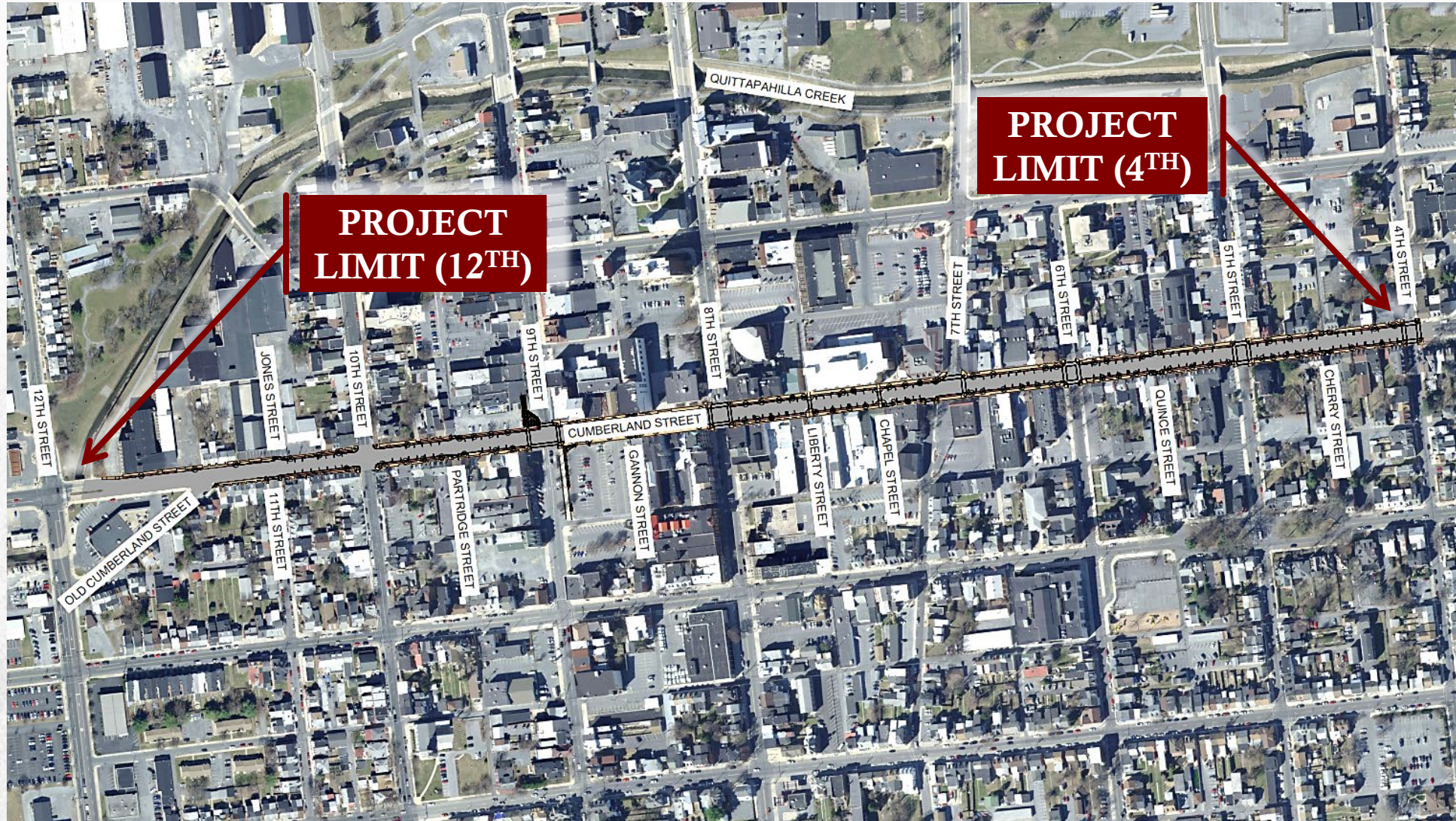
JIM WENGER, PRINCIPAL

QUESTIONS?

CUMBERLAND STREET STREETScape



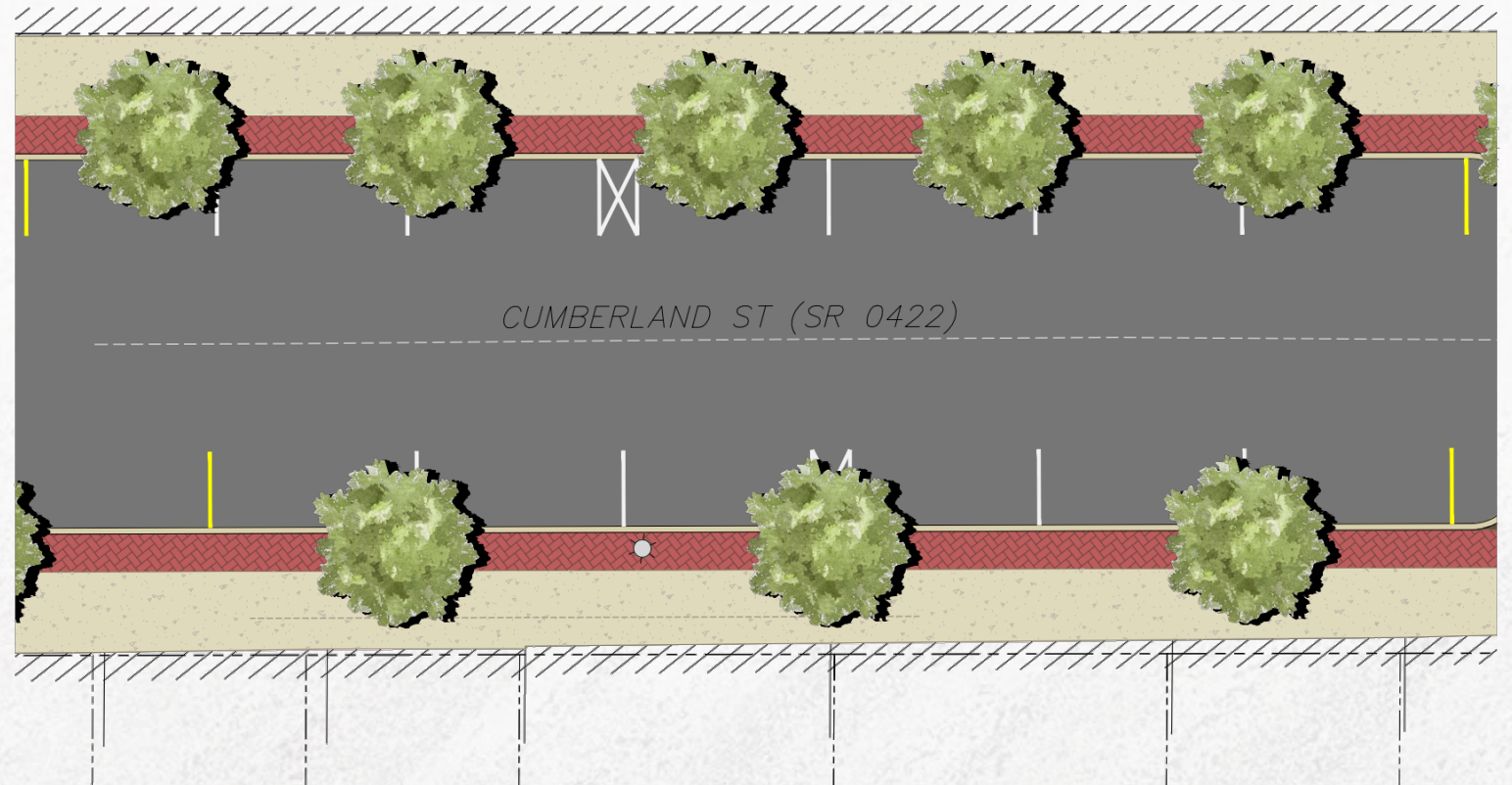
PROJECT LIMITS



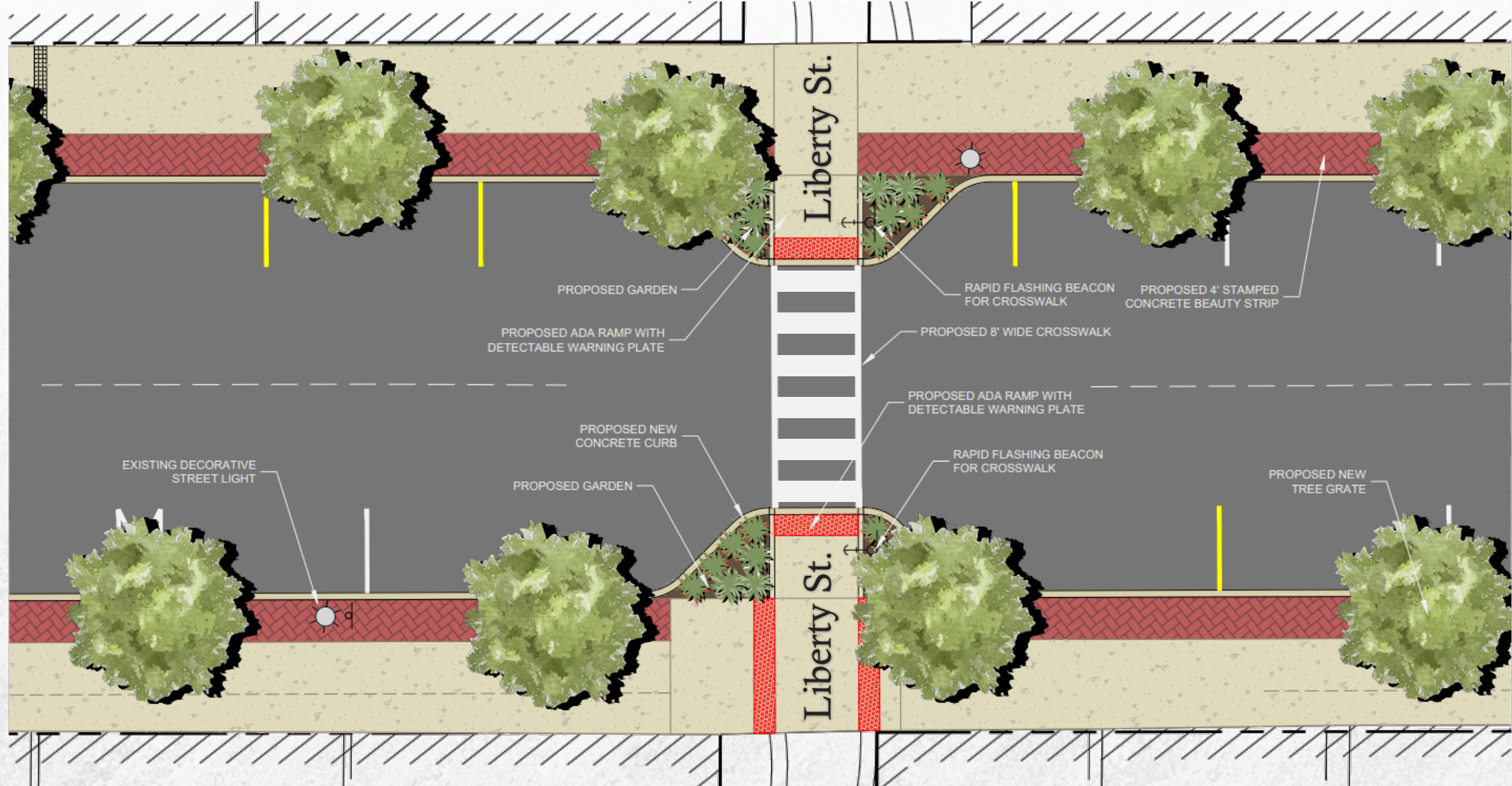
4TH STREET TO 12TH STREET

TYPICAL STREET IMPROVEMENTS

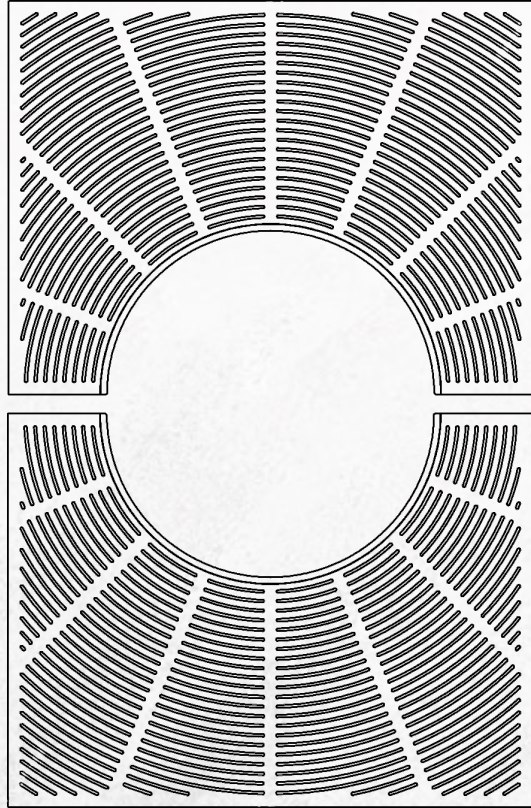
1. NEW CURB AND SIDEWALK
2. NEW STAMPED CONCRETE BEAUTY STRIP
3. EXPANDING AND REFURBISHING EXISTING VICTORIAN STREET LIGHTS & STREETSIDE ELECTRICAL SYSTEMS FOR EVENTS AND HOLIDAY LIGHTING
4. NEW EXPANDABLE TREE GRATES, NEW TREES PLANTED OR REPLACED WHERE NEEDED



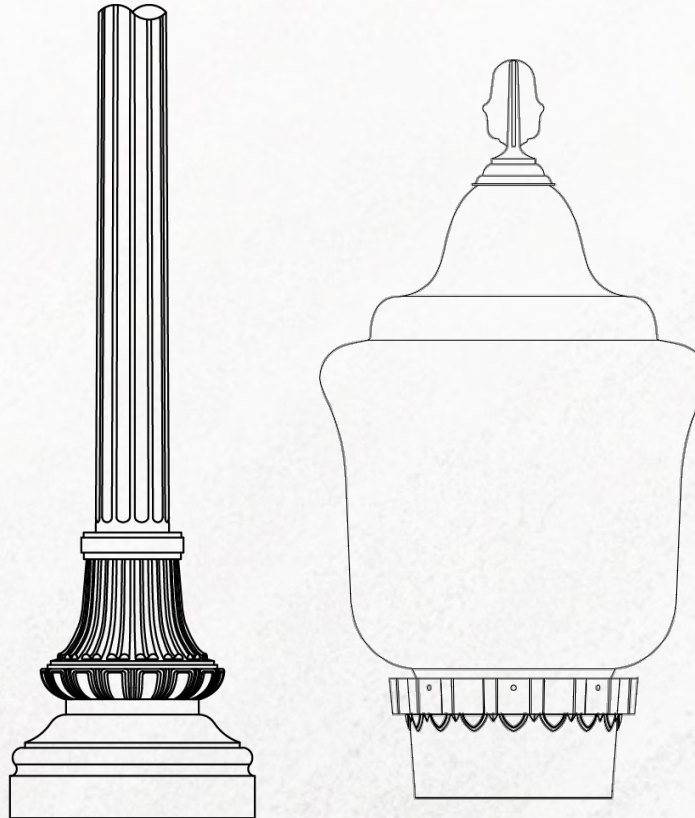
NEW PEDESTRIAN CROSSING AREAS



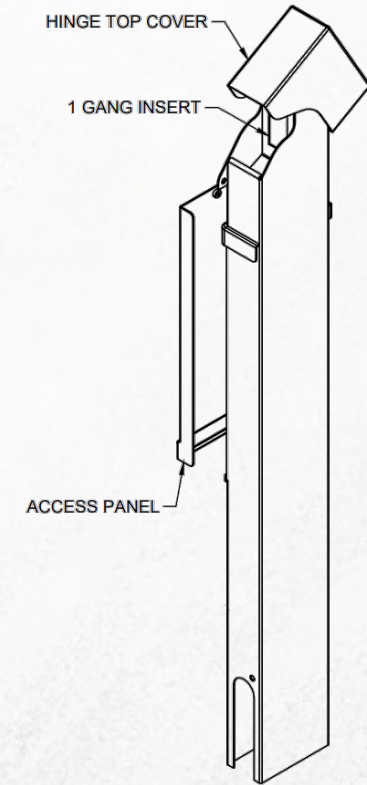
NEW STREET LIGHTS, TREE GRATES & OUTLETS



CAST IRON TREE GRATES



VICTORIAN STREET LIGHT
FEATURES

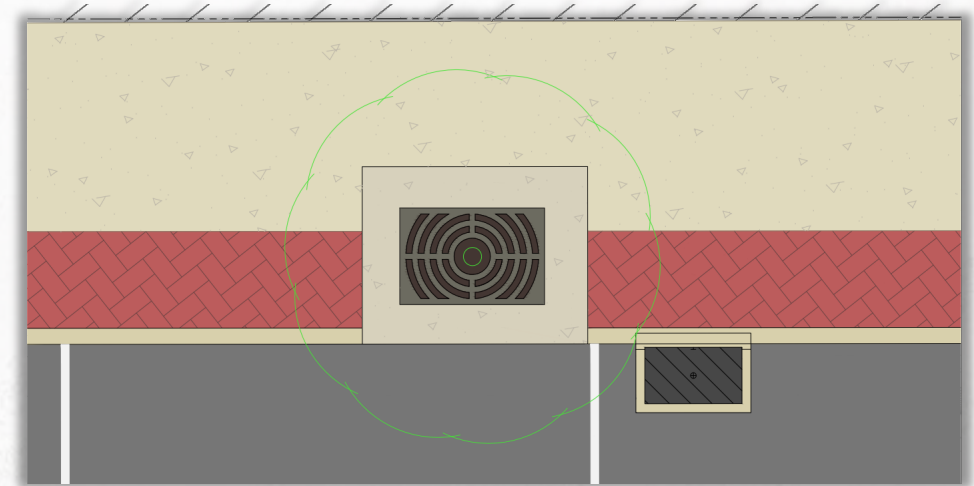
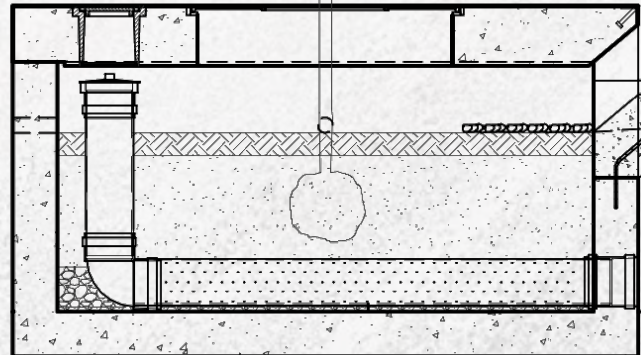


ELECTRICAL OUTLETS
ADJACENT TO TREES FOR
EVENTS AND HOLIDAY
LIGHTING

NEW TREE FILTERS

6 TREE FILTER SYSTEMS INTRODUCED

- TREE FILTERS TO REDUCE THE CITY'S STORMWATER SEDIMENT LOAD TO QUITTAPAHILLA CREEK BY 4,530 lb/year
- TREE FILTERS WILL PROVIDE POLLUTANT LOAD REDUCTIONS THAT COUNT TOWARDS THE CITY'S/LCSC'S MS4 POLLUTANT REDUCTION PLAN, WHICH WILL ULTIMATELY REDUCE SEDIMENT LOADS TO THE CHESAPEAKE BAY

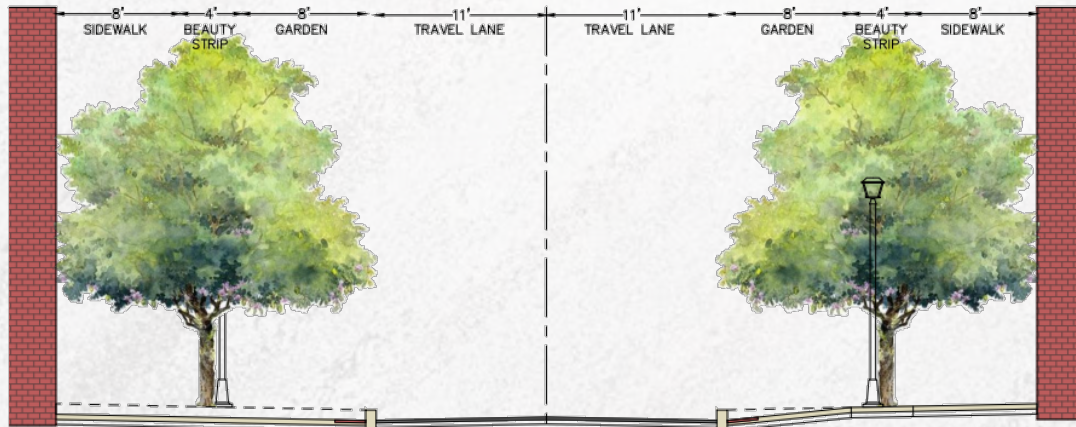
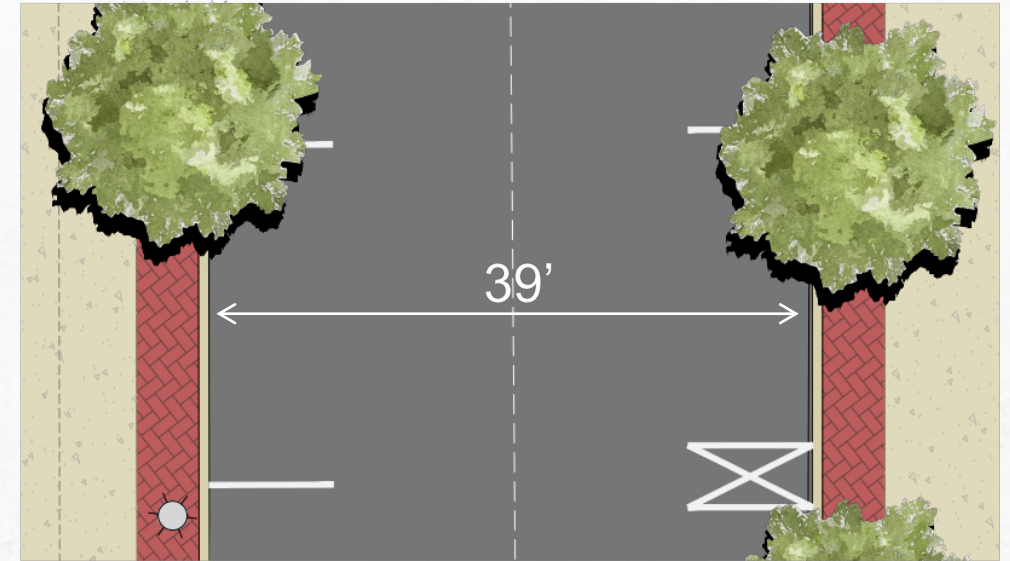
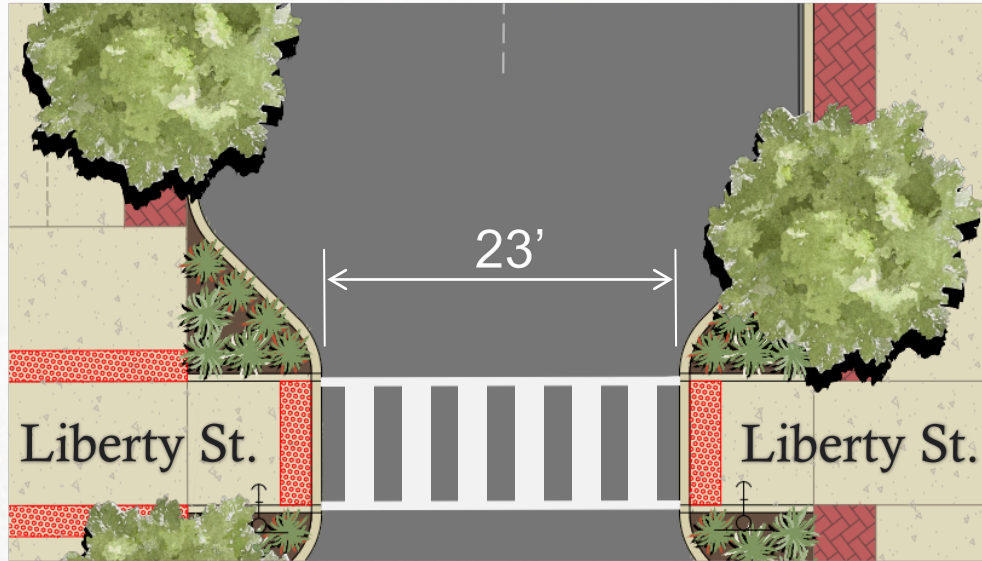


PLAN LAYOUT

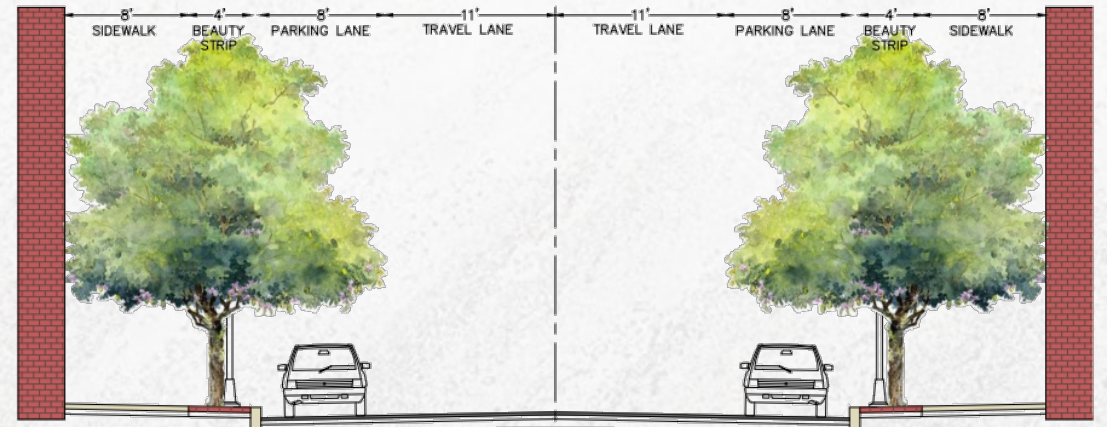


EXAMPLE SETUP

CUMBERLAND STREET CROSS-SECTIONS



CUMBERLAND STREET - CROSS SECTION AT LIBERTY STREET BUMP OUT



CUMBERLAND STREET - CROSS SECTION

9TH STREET IMPROVEMENTS



EXAMPLE DISPLAY BOX SETUP



PROPOSED DECORATIVE STAMPED CONCRETE, DISPLAY BOX IMPROVEMENT & CHRISTMAS TREE DISPLAY AREA

PROPOSED DECORATIVE STAMPED CONCRETE

PROJECTED PROJECT TIMELINE

CONTRACTOR MOBILIZATION
PROJECT START
SPRING 2023

PROJECT SUBSTANTIAL
COMPLETION
FALL-WINTER 2023

FINAL INSPECTIONS &
PUNCH-LIST ITEMS
WINTER-SPRING 2024



PROJECT CONSTRUCTION

Key Points:

- There is zero cost to City taxpayers and property owners for construction of this project. The project will be funded via the American Rescue Plan and a DCED Multimodal Transportation Fund grant. Without this funding, this work would otherwise be the responsibility of individual property owners as part of standard curb and sidewalk maintenance and replacement – **The average cost benefit of the project to properties with 45-feet of frontage along the project limits is upwards of \$19,000**
- The project's contract specifications will make it a point to minimize the time each individual home or business along Cumberland Street spends with their frontage under construction
- Construction will require cuts to be made into Cumberland Street as part of the work. The City is planning to resurface Cumberland Street in 2024 to restore the street after the project is complete

QUESTIONS?

W E L C O M E



Liberty Park Trail

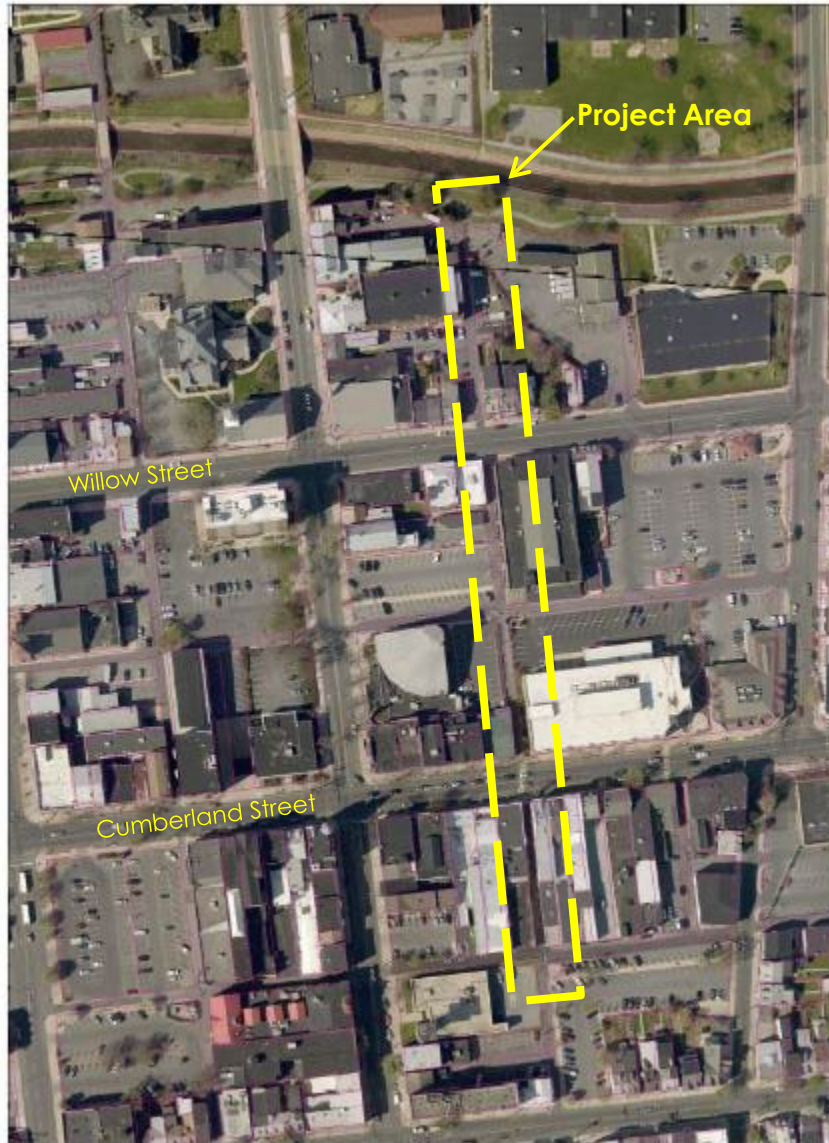
A Pocket Park
City of Lebanon, PA

August 31, 2022

 **HICKEY ARCHITECTS INC.**
466 Rt. 117 / PO Box 5 Mount Gretna, PA 17064
phf (717) 964.2005 www.hickeyarchitects.com

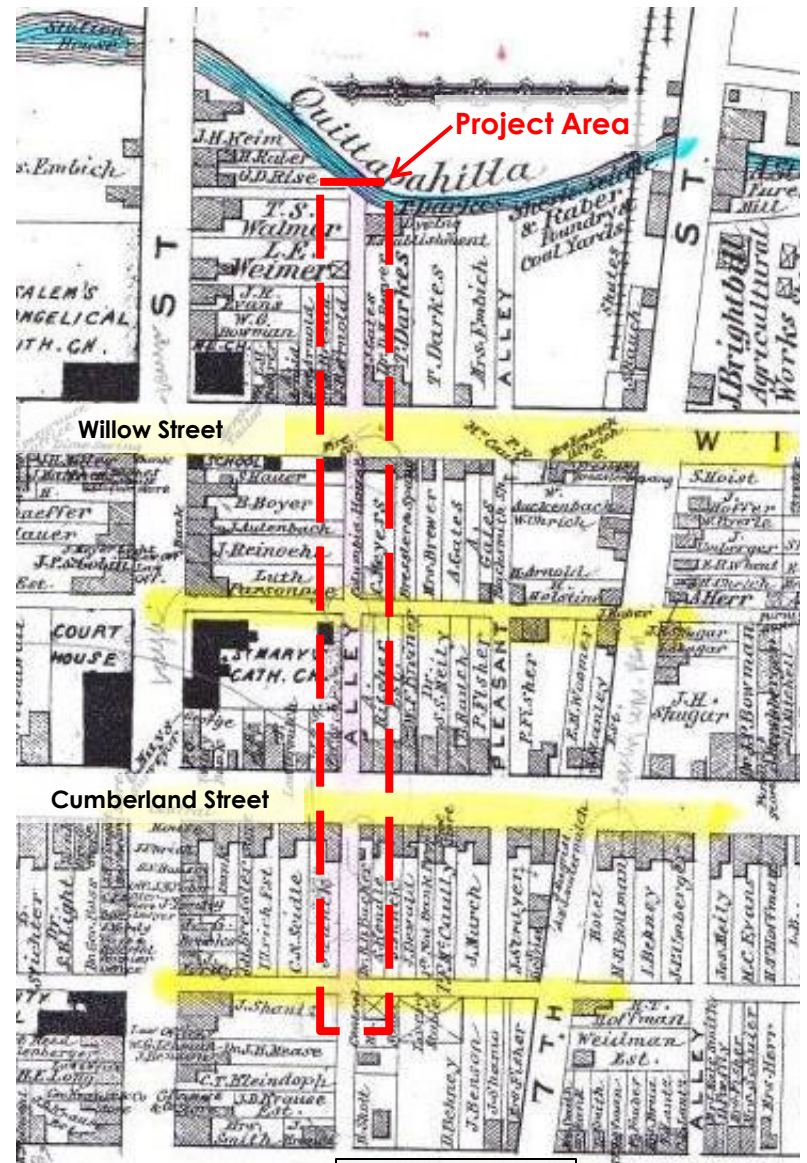
DERCK & EDSON
LANDSCAPE ARCHITECTS

Project Context



Lebanon Valley Conservancy Park
Schools of Conservancy Office at 402 Willow Street

2018 Map



1875 Map

Project Context



LVC Offices

Extend park / trail north to Willow Street and Whitmoyer Trail (?)

Liberty Park Trail – proposed location



Site Visit

Site Visit



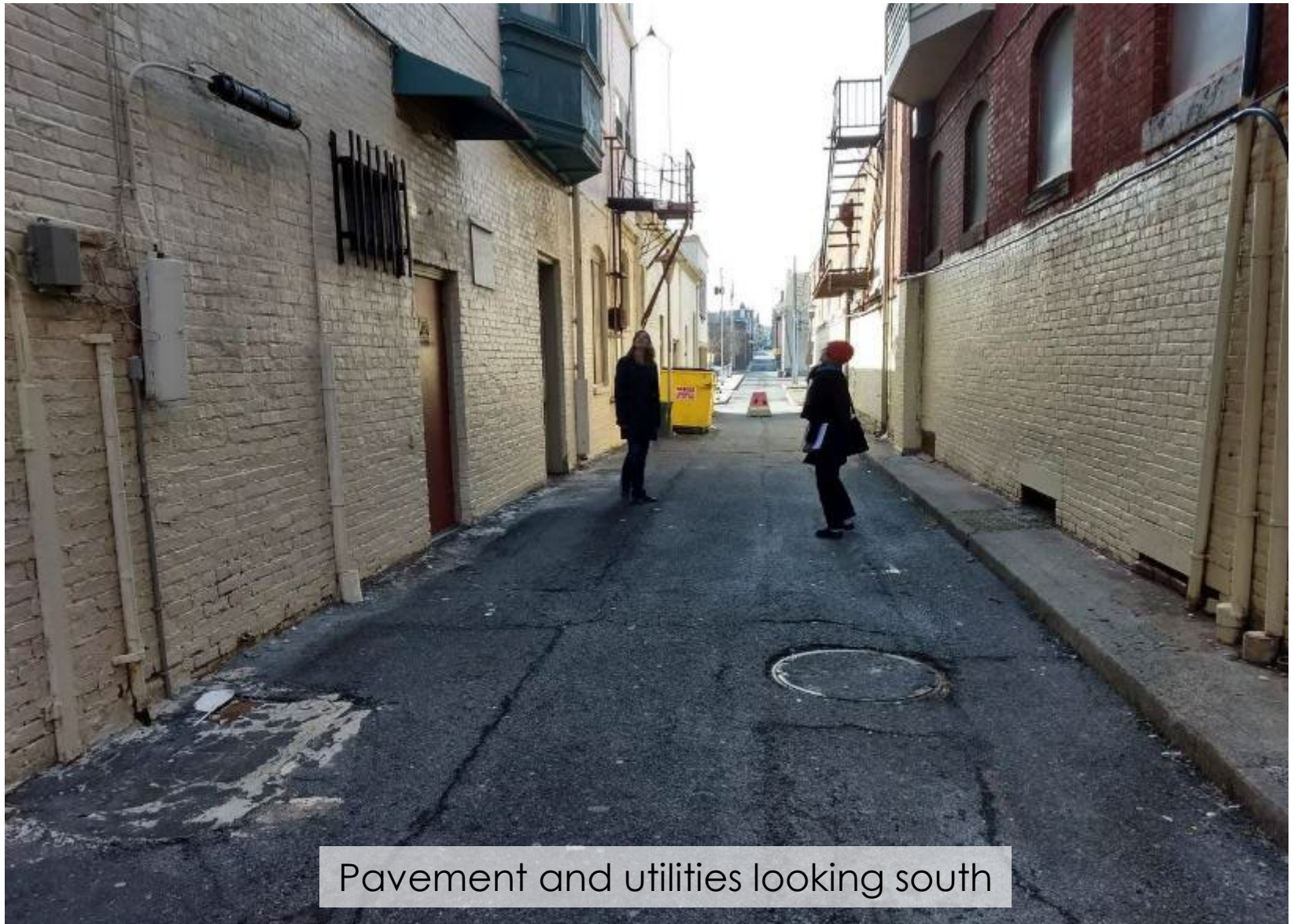
Liberty Street Alley looking south

Site Visit



Directly across Cumberland Street

Site Visit



Pavement and utilities looking south

VISION



Liberty Park will serve as a vibrant spine:

- connecting several blocks of the downtown
- acknowledging the past, while celebrating the future
- engaging the community
- encouraging neighbors to linger

Kick-off



Stakeholder Discussions

Key Issues

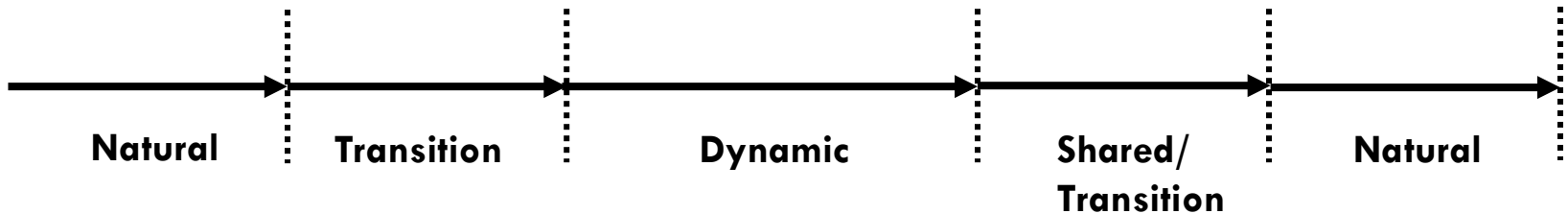
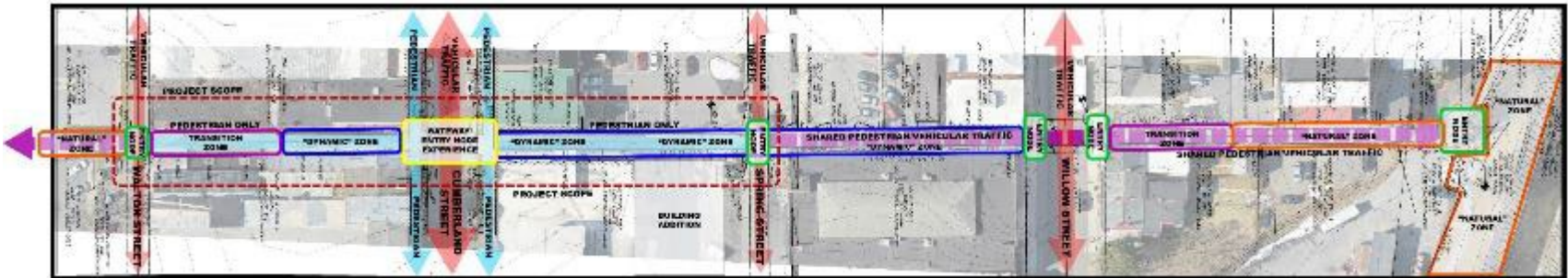


Liberty Park will need to address the following:

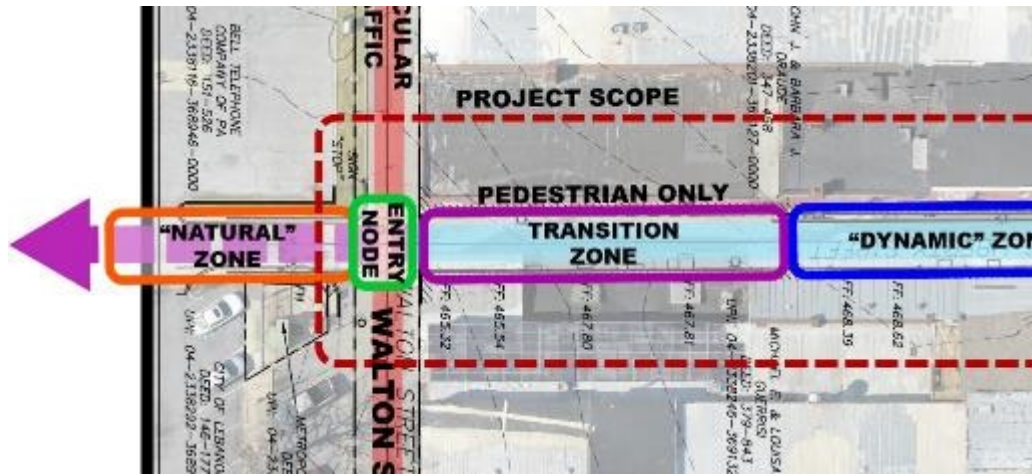
- drainage and challenges for winter conditions
- safety and security – individuals and properties
- service – dumpsters, recycling, maintenance, cleaning
- lighting – fixed, moveable, sensitive



Overall Bubble Diagram



Transition Zone

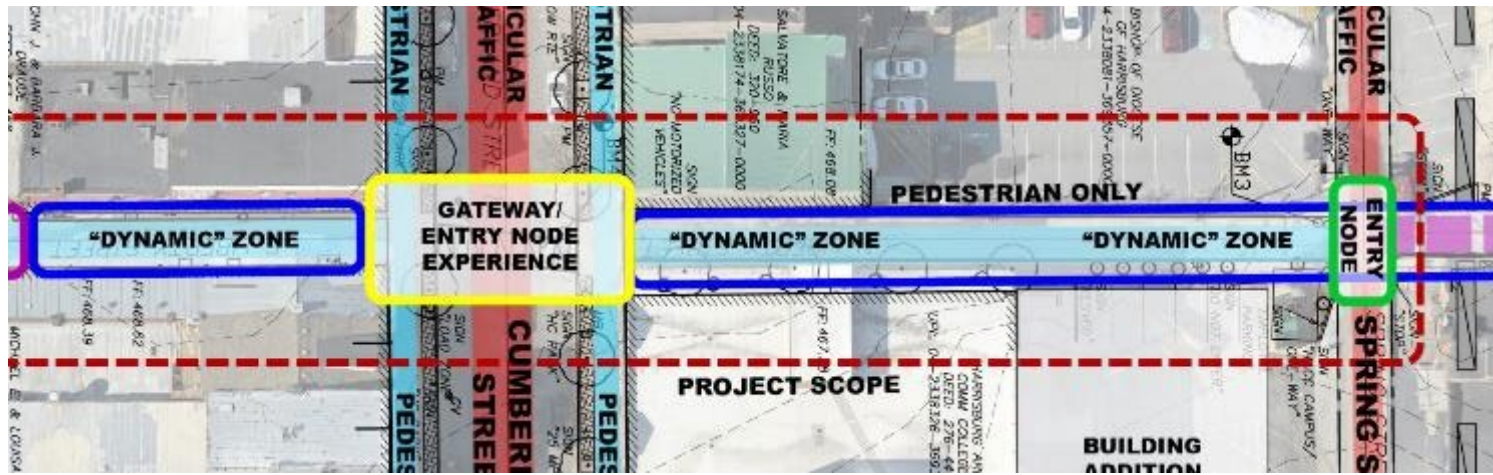


Plan Drawing



Existing Conditions

“Dynamic” Zone



Plan Drawing



Existing Conditions

DESIGN STRATEGIES

Ground Plane



DESIGN STRATEGIES

Vertical Plane

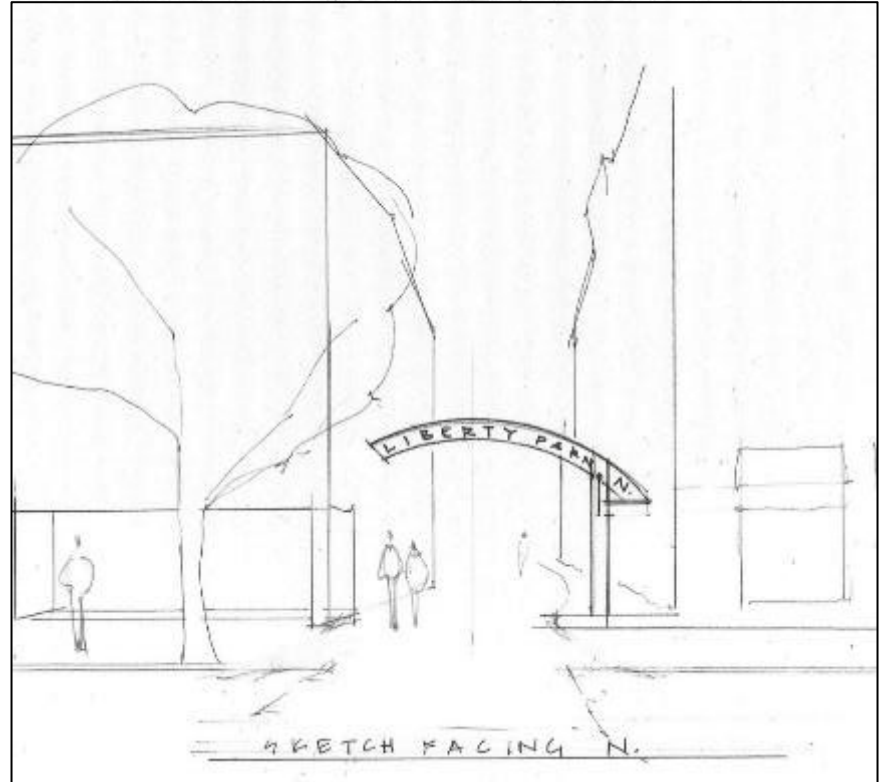
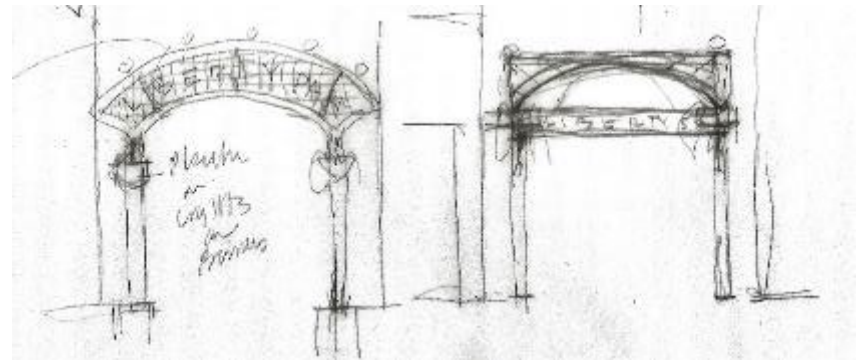
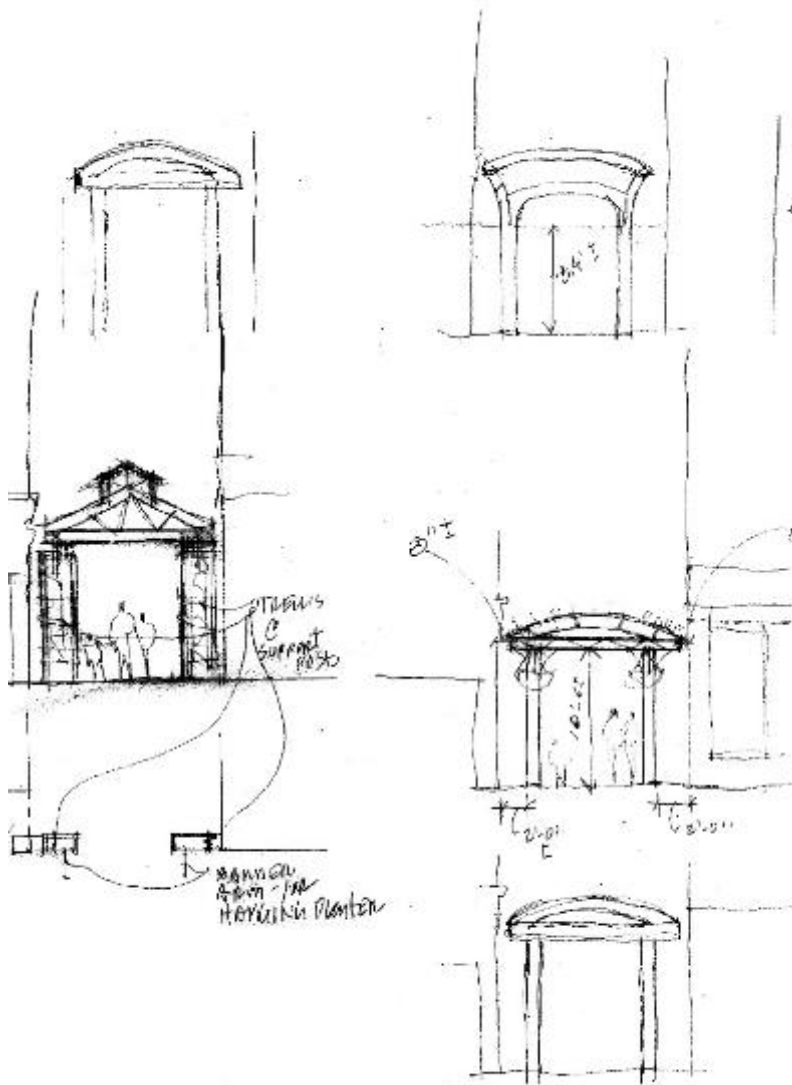


DESIGN STRATEGIES

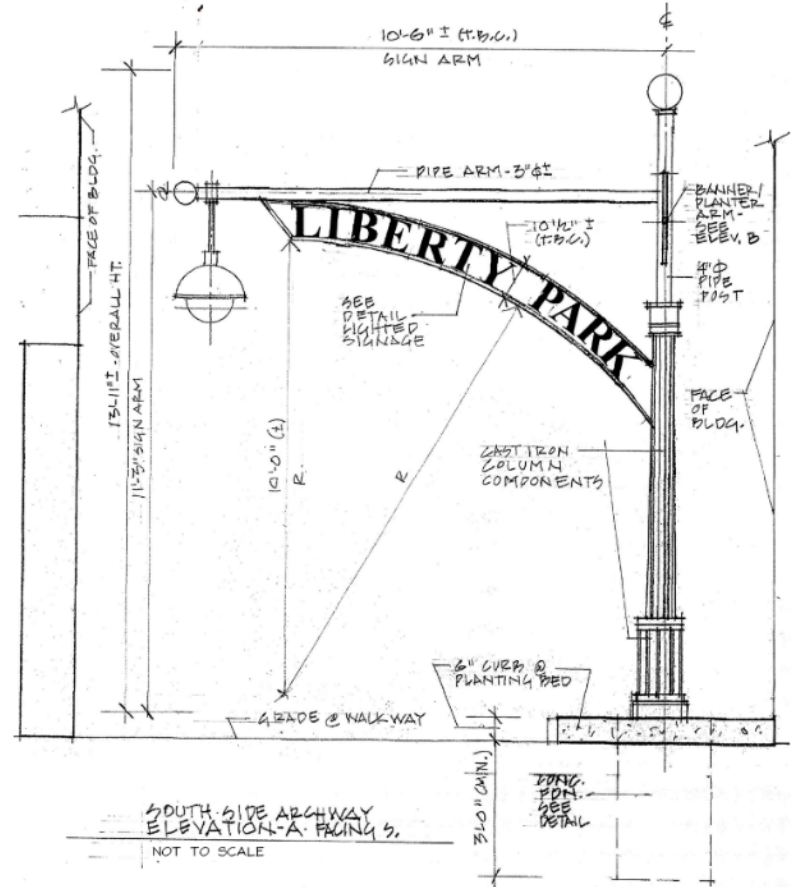
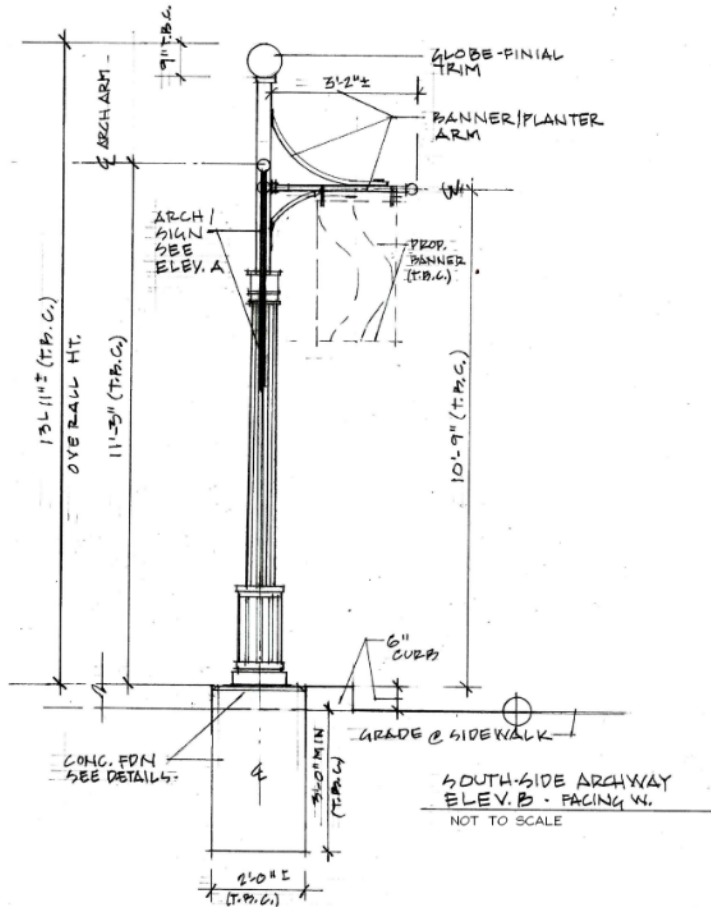
Overhead Plane



Gateway Concepts



Gateway Concepts



FINAL PLAN





BEFORE



AFTER



WEIDLE
WASTE MANAGEMENT
(717-272-7061)

P
NO
ANY
TIME

BEFORE



AFTER



ARTS NIGHT
MAY 27th - JULY 1st
MUSIC • DANCE • THEATER

Liberty Trail Park

A Pocket Park for City of Lebanon, PA



Staff Presentation- June 21, 2021