

# City of Lebanon

## Stormwater Fee

### What is New?

The City of Lebanon looks forward to continuing our partnership with the Lebanon County Consortium. The Consortium's goal is to assist all partner municipalities with meeting our pollution reduction requirements through our National Pollutant Discharge Elimination System (NSPDES) permit. The Department of Environmental Protection (DEP) has placed stringent requirements on owners of all Municipal Separate Storm Sewer Systems (MS4) located throughout the state. The Consortium is ready to proceed with several Best Management Practice (BMP) projects including streambank restoration. The COVID pandemic has caused supply shortages, increase in lead times and significant price increases and thus, some of the planned projects in 2021 were postponed until 2022, including the annual catch basin inspections. However, the City did inspect our 240 outfalls, conducted annual MS4 reporting and submitted the associated DEP permit for \$3,584. Additionally, repairs of catch basins throughout the City totaled \$18,023. We removed 299.59 tons of material from city streets through street sweeping at a cost of \$26,222. These numbers do not include the value of our workforce hours to perform these tasks.

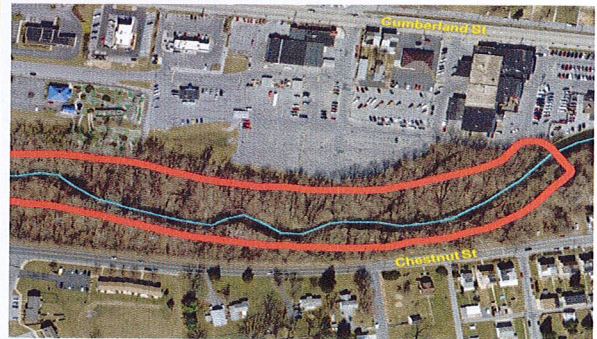
### What is Next?

The Consortium is ramping up for the construction of the largest project to date. The project will include an extremely large riparian buffer (area adjacent to a waterway that contains trees, shrubs and plants to provide conservation benefits) and an area to slow the moving waters down and thus, lessen the impact from the end of the Quittapahilla concrete channel into the natural creek in neighboring N. Cornwall Twp. The work will improve safeguards for downstream properties located along the Quittie in N. Cornwall Twp., Cleona Borough and Annville Twp. The total estimated cost is \$1,925,000 and will reduce the amount of sediment flowing into the watershed by 613,504 pounds. This project will meet our required annual reduction amount. We are excited to share the progress of this project. Stay tuned!



A cross-profile of a waterway

## Year 4 Newsletter



Largest-planned BMP construction location

The planned BMP above will meet the total required pollutant reduction needed to continue our planning efforts with our stormwater partners.

We will schedule the deferred projects that were delayed due to pandemic restrictions from 2021 to 2022.

We look forward to continuing the important environmental work of clean water for all- not only for now, but for future generations in LEBANON- THE PLACE TO GROW!